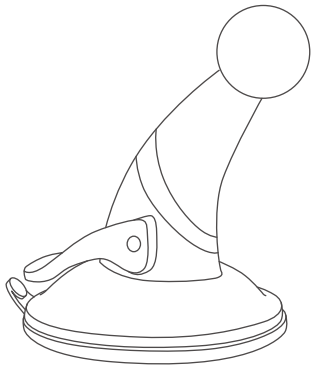


# User's Manual

1

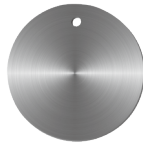
## Package Contents



2 Magnetic Car Mount \*1



Swivel Head



Round Steel Plate \*1



Gel Pad \*1



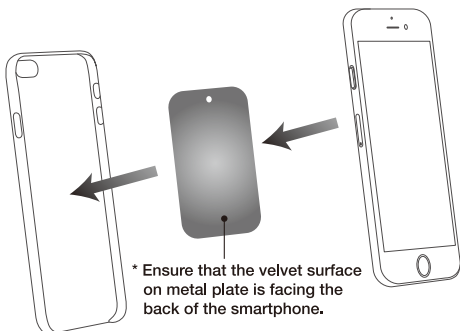
Rectangular Steel Plate \*1

# Installation

3

## A. Metal Plate Installation with Phone Case

- Step1** Remove your smartphone from the protective case.
- Step2** Place the rectangular metal plate at the center of protective case, then put the protective case back on the smartphone.

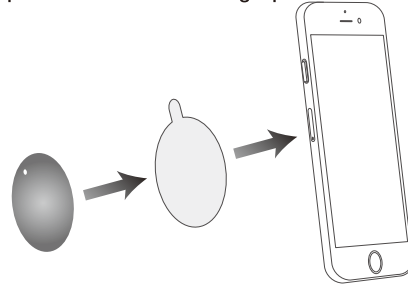


\* Ensure that the velvet surface on metal plate is facing the back of the smartphone.

4

## B. Metal Plate Installation without Phone Case

- Step1** Remove the gel pad from the protective film and attach it to the back of the smartphone.
- Step2** Peel off the double adhesive tape from the round metal plate and attach it to the gel pad.

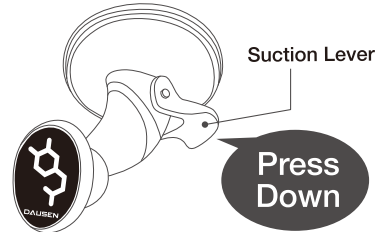


5



## Attach the Magnetic Car Mount to Windshield

- Step1** Ensure that the windshield is clean before installing the car mount.
- Step2** Remove the protection sheet from the suction cup.
- Step3** Install the car mount on windshield by pressing down on the suction lever.

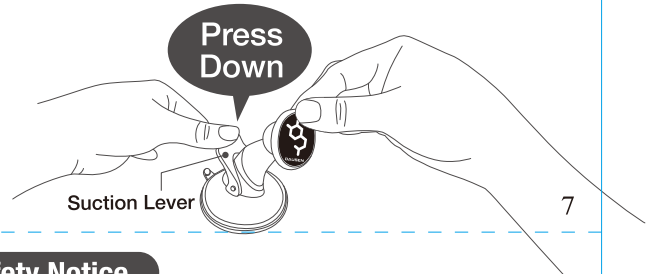


6



## Attach the Magnetic Car Mount to Dashboard

- Step1** Ensure that the dashboard is clean before installing the car mount.
- Step2** Remove the protection sheet from the suction cup.
- Step3** Install the car mount on dashboard by pressing down on the suction lever.



7

## Safety Notice

- Please be aware of the rules and regulations of the country or region that you are in while driving.
- Do not disassemble or modify the car mount for any reason, otherwise it may damage or break the car mount.
- Please keep the car mount along with all the accessories out of the reach of children and pets.
- Do not put the car mount under an environment in which the temperature is too low or too high (below -20°C or over 70°C)



8